

Fundraising for a facility at the heart of a healthy Shipston and beyond

The League of Friends of The Shipston on Stour Hospitals (LoF) see the new facility as the heart of a healthy Shipston on Stour and beyond. They are raising funds to help make it the best it can be and would be extremely grateful of your support.

As a charity that works hard to benefit the community, the LoF are developing lots of ways for the community to get involved and this will include organising fundraising events that will bring local people together once it is safe and sensible to do so. You will be able to drop your spare change into charity collection tins located in local shops and help to raise the profile of the appeal by wearing an Ellen Badger Hospital pin badge with pride!

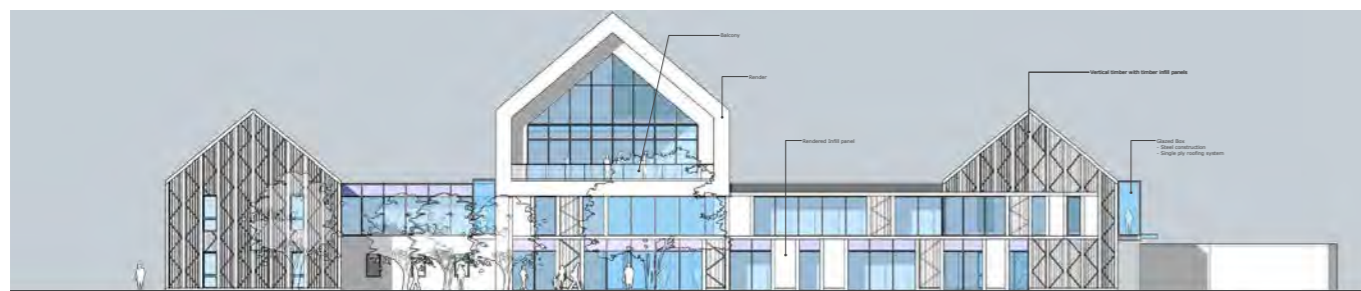
In the meantime, you can keep up to date with the fundraising appeal and make a donation by searching for 'League of Friends of Shipston on Stour Hospitals' on Facebook.

Two major legacies from **John Peart** of Shipston and **Percy Lomas** of Halford enabled us to purchase the additional land upon which this development is taking place.

If you wish to leave a legacy, of any size, to support the development of the hospital into the future please contact the LoF at the Ellen Badger Community Hospital and you will be given advice about this. If you wish to remember a friend or relative by making a contribution, the LoF will explain how this may be done.



www.facebook.com/ellenbadgerhospital



Ellen Badger Hospital Development

Update – May 2020

Since the last project update, the COVID-19 pandemic has obviously been the main focus of the work for our staff and partners across the health and care system. Although keeping our communities safe has been our priority, technology has enabled us to work virtually. This means we've made fantastic progress towards our goal of building "A modern integrated Health and Wellbeing Community Hub" for the people of Shipston on Stour and surrounding areas.

This work has focussed on the design of the site, taking into account things like:

- How the existing inpatient and community services will be affected
- The shape and features of land surfaces (known as the topography) and any flood risk
- Access to the site and how it fits with the wider town
- How we can deliver a cutting edge facility while respecting the site's heritage

Develop in one phase or stages

We understand that Ellen Badger Hospital and Shipston Medical Centre are important healthcare hubs for Shipston on Stour and the surrounding areas. This means we need to carefully plan how we develop the site to minimise any impact on the community.

We looked at the options for developing the site in stages as this would mean inpatient services could still be provided during the construction. Unfortunately, we found that building this way could affect the care we provide patients and may cost more money. As a result, this proposal was ruled out in favour of completing the project in one go.

To do this we would need to temporarily relocate patients until the new premises is complete. For context, 83% of patients admitted or transferred into Ellen Badger Hospital are from outside of the Shipston area.

More information including the timescales will be shared once we have looked at the options.



Key Plan

Design

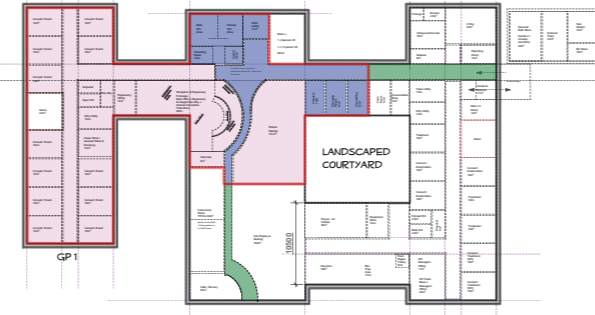
Designers One Creative have created 1:200 scale drawings to show how the site could look. These mark an exciting milestone for the project but it is important to note that they are very much early proposals; more work needs to be done to ensure we deliver a facility that meets the needs of the community now and throughout the 50 year lifespan of the development while being affordable and representing good value for taxpayers' money.

KEY FEATURES:

- Outpatients, Day Hospital, Diagnostics and part of the GP Practice are located on the ground floor. They would be accessed via a shared area which provides reception, waiting, café and facilities to support general Health & Wellbeing activities
- Inpatients, the remainder of the GP practice as well as meeting areas are located on the first floor and easily accessed via the lifts and staircase located at the front of the development
- The remainder of the staff accommodation including offices, meeting space, welfare and storage are distributed across both the second and third floors which can be accessed via lift or staircases
- Two separate car parking areas with the main car park situated on the left designed to compensate against known flood risks
- Space will be available to enable the mobile units to be located on the site, helping us to be flexible and respond to the healthcare needs of the local population.

In addition to the building design drawings, landscaping designs have also been developed. These highlight the ambition for the development to fit into the surroundings harmoniously and for the environment to be an integral part of the health and wellbeing offering.

GROUND FLOOR DIAGRAM



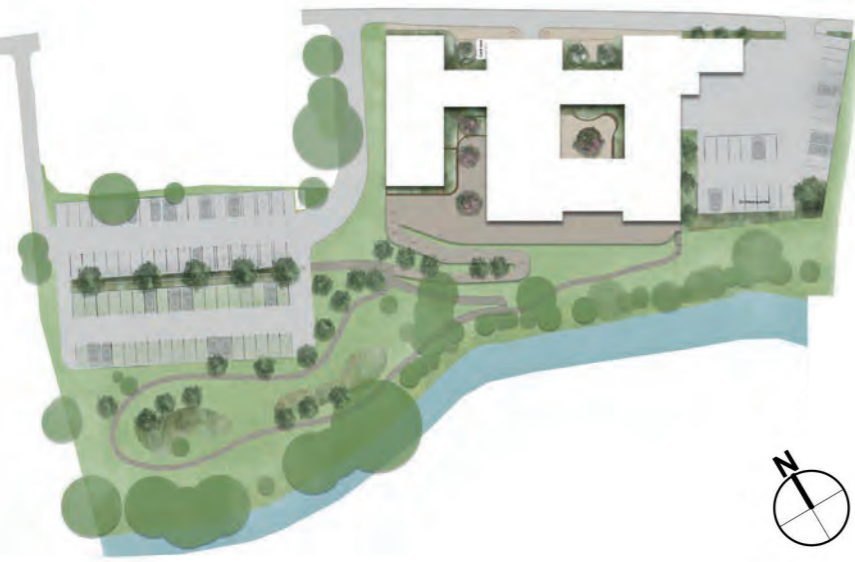
Health and Wellbeing Hub

Landscaping

- Rear of the site landscaped to provide a range of social and therapeutic activities as well as views of the River Stour and countryside.
- The bedded area with the ward has been designed so that it overlooks the River Stour and countryside area.

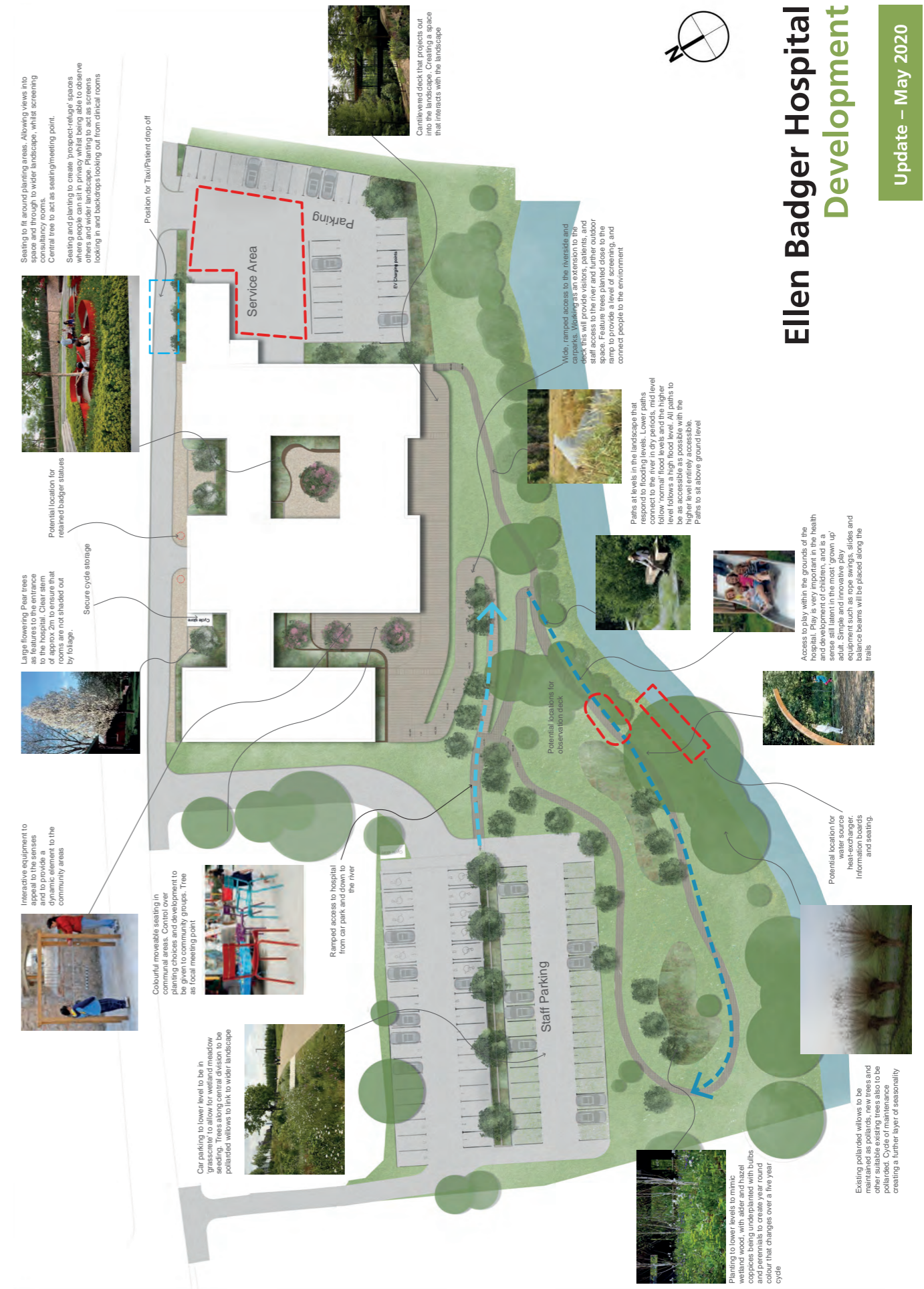
Next steps

- Review the impact of COVID-19 to identify any potential areas of improvement
- A range of consultants including Heritage, Transport, Arboriculturalist and Ecology to undertake a detailed assessment of the site
- Submit Pre-Planning Application to Stratford District Council.
- Relevant Trust departments to comment on 1:200 drawings
- Assessment of the overall affordability of the project
- Business Case to be submitted to South Warwickshire NHS Foundation Trust Board and South Warwickshire Clinical Commissioning Group's Primary Care Committee during Summer.



Our ambition is to create a facility that serves the community now and in future, so we are keen to work closely with you.

If you would like to know more or make comments and suggestions please email: EBHdevelopment@swft.nhs.uk



Ellen Badger Hospital Development

Update – May 2020